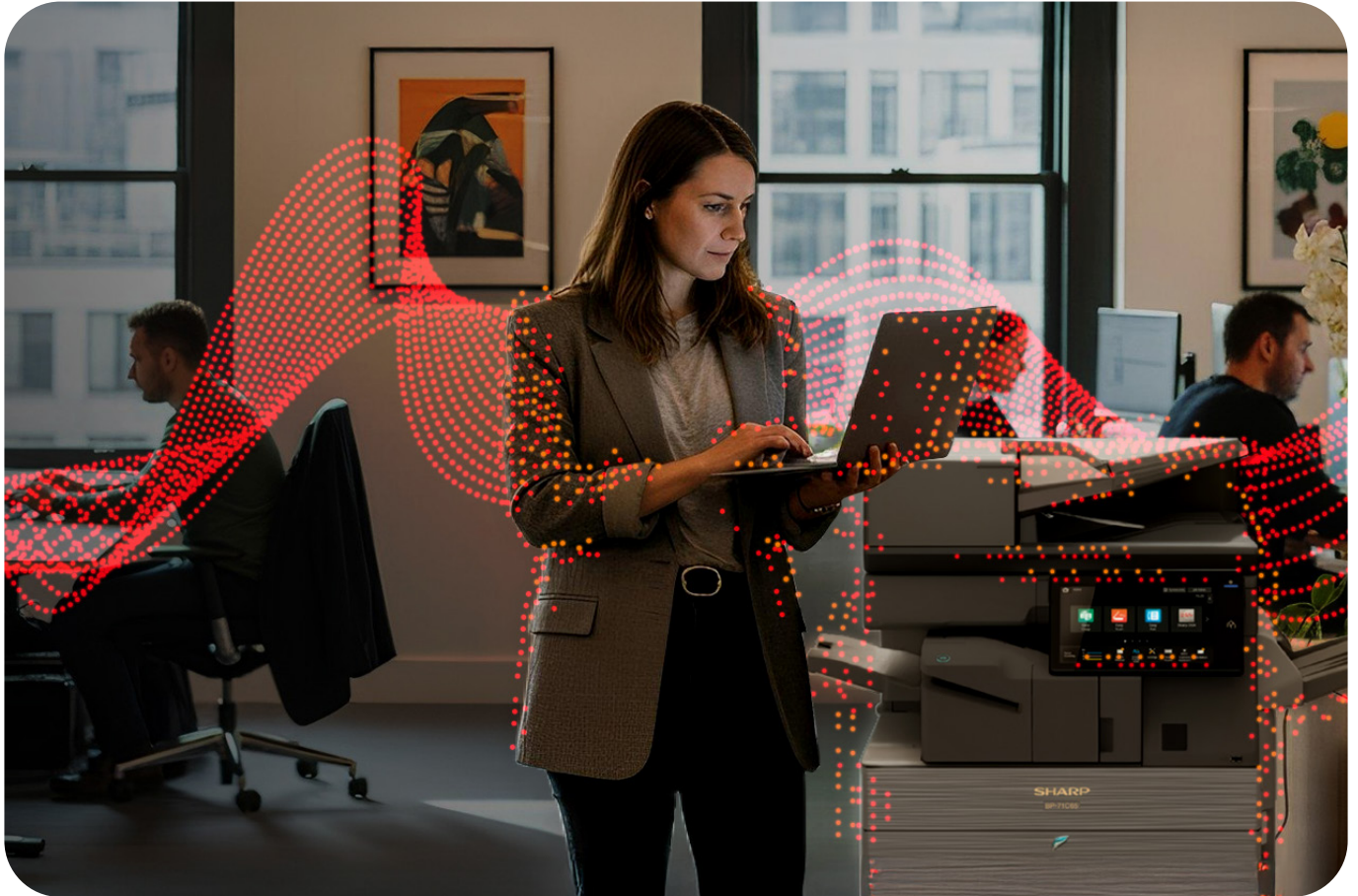


Print security

Bitdefender.

cbs

Copy • Print • Scan • IT • Telecoms



Virus Detection Kit

While the issue of data security is high on the agenda of most organisations, printers are often overlooked and can be a potential weak spot in your document security, print security, device security and network security.

Recent research conducted by Sharp shows that 21% of office workers confirmed that they do not have any security processes in place for printers or MFPs*. In reality, anything connected to a networked environment can be a vulnerability granting attackers access to your wider infrastructure.

What is Bitdefender?

Bitdefender is an award-winning anti-malware engine that helps protect users against a full range of cyber threats. It implements multiple technologies and detection methods to ensure industry leading detection accuracy.

Bitdefender complements native security features of the MFP, protecting it against known and unknown malware threats such as:

- Viruses
- Trojans
- Worms
- Ransomware
- Spyware
- Persistent Threats

Bitdefender's detection logic has been designed with real-life usage scenarios in mind, offering optimal performance and satisfactory user experience at all times.

* "Simple Printer Security for Small Business", 2020, Sharp

Bitdefender

cbs

Copy • Print • Scan • IT • Telecoms

SHARP

How does it work?

Scanning for viruses is scheduled every day by default in Sharp machines. Bitdefender also conducts scans real-time whenever data is sent or received, such as during a print job from the cloud, updating an application, running a firmware update etc.

Users can also run a virus scan on demand from the control panel.

All related activities will be recorded in the MFP Audit Log when enabled.

Virus scanning information will be displayed in the 'System Information' section of the control panel and urgent alerts will be displayed in the notification area.

The Bitdefender virus detection kit scans inbound/outbound data:



Web/networks

- Firmware updates
- OSA Apps
- Fonts/Colour Profiles
- MFP User Manuals
- Cloning/backup



Cloud services

- Box/Dropbox
- Microsoft Teams/OneDrive
- Google Drive
- Universal Print



Network PC drivers

- Print Drivers
- LPR printing
- PC Fax/PC iFax
- FTP, IPP



Direct connections

- All direct printing
- Firmware
- OSA Apps

Compatible models

A3 Colour Photocopiers

BP-70C65, BP-70C55, BP-70C45, BP-70C36, BP-70C31
BP-60C45, BP-60C36, BP-60C31, BP-50C65, BP-50C55,
BP-50C45, BP-50C36, BP-50C31, BP-50C26, BP-55C26

BP-80C90, BP-70C90, BP-71C65, BP-71C55, BP-71C45,
BP-71C36, BP-71C31, BP-61C45, BP-61C36, BP-61C31
BP-56C26, BP-51C65, BP-51C55, BP-51C45, BP-51C36,
BP-51C31, BP-51C26

A4 Colour Photocopiers

BP-C542WD, BP-C533WD, BP-C533WR

A3 Black & White Photocopiers

BP-70M90, BP-70M75, BP-70M65, BP-70M55, BP-70M45,
BP-70M36, BP-70M31, BP-50M65, BP-50M55, BP-50M45,
BP-50M36, BP-50M31, BP-50M26

BP-71M65, BP-71M55, BP-71M45, BP-71M36, BP-71M31
BP-51M65, BP-51M55, BP-51M45, BP-51M36, BP-51M31,
BP-51M26

A4 Black and white Photocopiers

BP-B547WD, BP-B537WR